



HML 42 Mobile Excavator

Power and state-of-
the-art engineering

Operating weight 11-12 t
Engine output 67 kW (91 HP)
Bucket capacities 130-410 l



HML 42 – The machine illustrated may include non-standard equipment



Technical data

Engine

Manufacturer	Deutz
Type	4-cylinder, turbocharged diesel engine
Combustion	4-stroke, direct injection
Displacement	4040 cm ³
Power rating acc. to ISO 9249 (DIN 70020) at 2000 rpm	67 kW (91 HP)
Cooling system	Water

Electrical system

Operating voltage	12 V
Battery	12 V / 135 Ah / 600 A

Power transmission

Closed circuit, independent of working hydraulics. Hydrostatic drive with automatic adjustment of drawbar pull and speed. All-wheel drive from reduction gear on rear axle via cardan shaft to front axle. Infinitely variable speed control forward and reverse in 2 speed ranges:

Working speed	0-6 km/h
Travel speed	0-20 km/h

Axles

Front axle: oscillating planetary drive axle.	
Oscillating angle	13°
Rear axle: rigid planetary drive axle.	

Tires

9.00-20, 14 PR twin tires	as standard
600/40-22.5 extra wide-base tires	option

Brakes

Service brake: hydraulic dual-circuit pump accumulator brake, acting on oil-immersed multi-disc brakes of front and rear axles.

Excavator brake: acting on front and rear axles through lockable service brake.

Auxiliary brake: Hydrostatic drive provides dynamic braking.

Parking brake: Hydraulic spring-loaded brake, electrically controlled.

Steering

Fully hydraulically controlled front axle with integrated steering cylinder.

Max. steering angle	30°
---------------------	-----

Swing system

Hydrostatic drive with 2-stage planetary gear and axial piston fixed displacement motor, also acting as wear-resistant brake. Additionally, an automatically controlled spring-loaded multi-disc brake acting as parking brake when the pilot-controlled lever is in neutral position.

Swing speed	0-10 rpm
-------------	----------

Hydraulic system

Travel hydraulics: Closed circuit, independent from working hydraulics.

Max. pump capacity	180 l/min at 420 bar
--------------------	----------------------

Axial piston pump with load-sensing, coupled with a load-independent flow division (LUDV). Simultaneous, independent control of all actions. Sensitive maneuvers irrespective of loads.

Max. pump capacity at max. pressure 200 l/min at 280 bar
Triple gear pump for all positioning functions and swing movements. Pressure cut-off valve for sensitive and energy-saving swing movements.

Pump capacities	39 + 26 + 11 l/min
-----------------	--------------------

Control circuit for work attachments:

Max. operating pressure	280 bar
-------------------------	---------

Pump capacity, adjustable	20-130 l/min
---------------------------	--------------

Two servo-assisted four-way control levers for excavator operations.

Operating data (with standard attachments)

Operating weight	10,990 kg
Overall length in travel position, "TPA"	5860 mm
Overall length in transport position, "TPA"	6530 mm
Overall height in travel position	3975 mm
Total width (twin tires)	2500 mm
Total height over cab	2990 mm
Tread width	1942 mm
Wheel base	2570 mm
Ground clearance below cardan shaft	440 mm
Turning radius	7200 mm
Uppercarriage tail swing	1600 mm
Uppercarriage front swing	3000 mm
Slew circle 180°	4600 mm
Slew circle 360°	6000 mm
Breakout force in compliance with DIN 24086	72,000 N
Ripping force in compliance with DIN 24086	58,500 N

Knickmatik®

Lateral parallel adjustment at total digging depth.

Angle of artic. / Lateral adjustm. to the left 54° / 760 mm

Angle of artic. / Lateral adjust. to the right 54° / 1030 mm

Cab

Sound-insulated full-vision steel cab. Right-hand sliding window, safety glass windows, skylight. Front window, supported by pneumatic springs, slideable under cab roof. Cab heating with windshield defroster through hot water heat exchanger with 3-setting fan. Choice fresh air / recirculating air, fresh air filter.

Hydraulically cushioned comfort seat with armrests and longitudinal, height and tilt adjustments. Operator control levers adjustable in longitudinal position. Telescopic and tilt-adjustable steering column. Instrument panel with safety module. Working floodlights Halogen E-3.

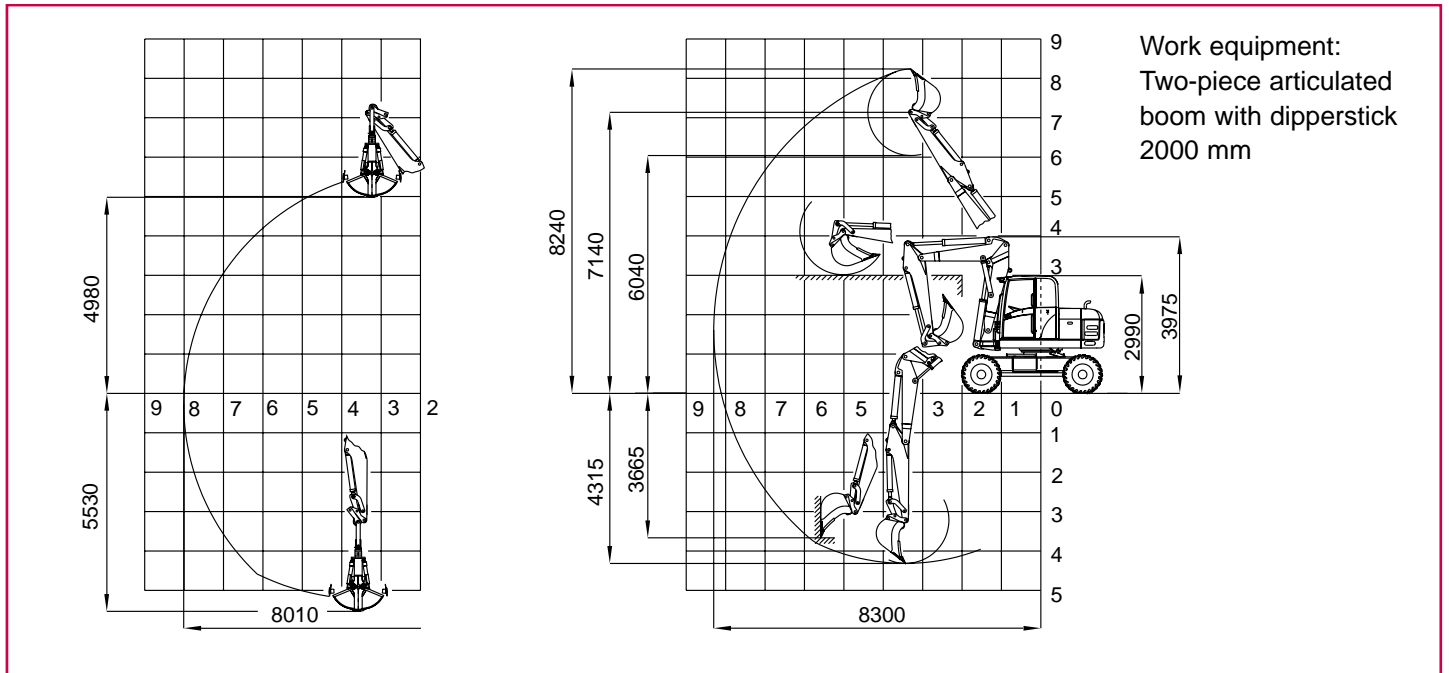
Noise emission ambient L _{WA}	99 dB (A)
Measured in dynamic measuring cycle according to 2000/14/EC.	

Fluid capacities

Diesel tank capacity	240 l
Hydraulic system (incl. tank)	190 l

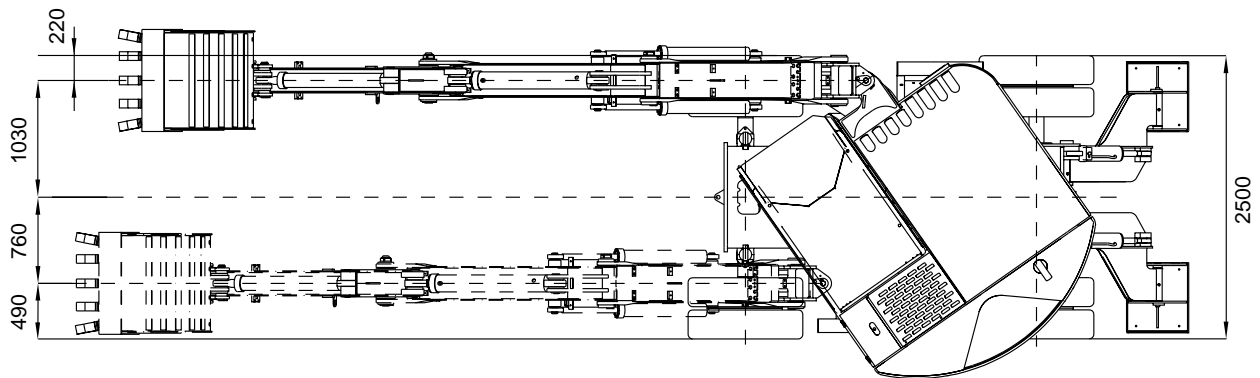
Digging envelope

HML 42 Two-piece articulated boom "TPA" (All dimensions refer to 9.00-20 tires.)

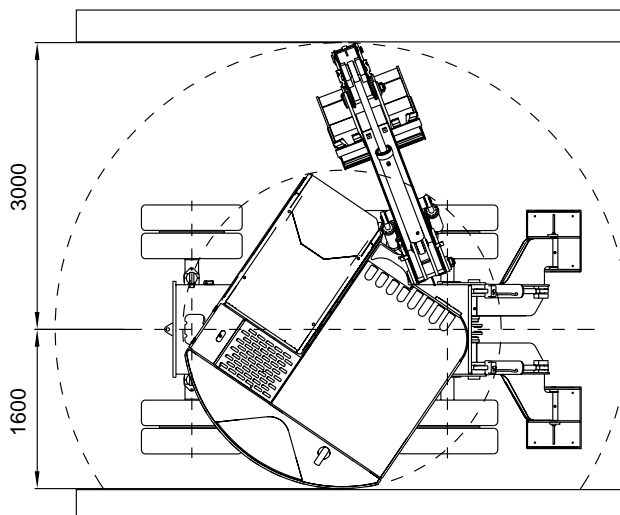


Dimensions

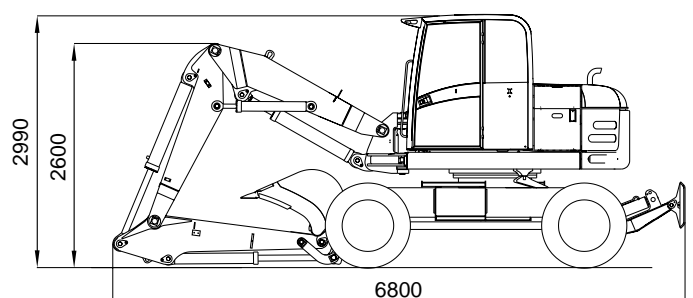
HML 42 "TPA" - Excavation within the entire machine width - no repositioning of machine



HML 42 Slew circle - Top view



HML 42 Transport position



Carrying capacity

Load radius from the center of the ring gear

Bucket hinge height		3.0 m		4.0 m		5.0 m		6.0 m		7.0 m		7.1 m	
		180°	90°	180°	90°	180°	90°	180°	90°	180°	90°	180°	90°
3.0 m	Supported	–	–	3.11	2.63	2.44	1.91	2.39	1,31	1.98	0.92	–	–
	Traveling	–	–	2.56	2.40	1.76	1.71	1.28	1,18	0.92	0.83	–	–
1.5 m	Supported	4.91	3.87	3.11	2.51	2.72	1.79	2.71	1,25	1.94	0.89	1.89	0.83
	Traveling	3.88	3.54	2.51	2.30	1.77	1.62	1.20	1,13	0.83	0.78	0.80	0.74
0 m	Supported	6.50	3.60	3.88	2.36	3.00	1.68	2.57	1,22	1.79	0.88	1.79	0.85
	Traveling	3.65	3.31	2.35	2.21	1.65	1.54	1.18	1,12	0.84	0.79	0.82	0.76
– 0.9 m	Supported	7.26	3.43	4.25	2.16	3.34	1.50	2.51	1,11	1.77	0.86	–	–
	Traveling	3.43	3.25	2.27	2.04	1.59	1.43	1.15	1,03	0.87	0.81	–	–

All values in tons (t) were determined acc. to ISO 10567 and include a stability factor of 1.33 or 87% of the hydraulic lifting capacity. In each case, the smaller value is indicated. All values were determined with load hook. If a bucket is attached, the difference weights bucket minus load hook must be deducted from the permissible payloads. When used for crane operations, excavators must be equipped with hose-rupture safety valves and overload warning device according to EN 474-5.

Work equipment: TPA = two-piece articulated boom, twin tires

Additional equipment

Tires

600/40-22.5 (wide-base tires)

Buckets (quick-mounting)

Bucket, tapered	350 mm / 130 l
Bucket, tapered	450 mm / 175 l
Bucket, with ejector	350 mm / 145 l
Bucket, with ejector	450 mm / 200 l
Bucket	600 mm / 250 l
Bucket	750 mm / 330 l
Bucket	900 mm / 410 l*
Ditch-cleaning bucket	1500 mm / 300 l
Swing bucket, 2 x 40°	1500 mm / 345 l

Clamshell grabs

GS 3325	325 mm / 150 l
GS 3400	400 mm / 200 l
GS 3500	500 mm / 250 l
GS 3600	600 mm / 325 l*

Hydraulic transverse cutting unit

Type WS 30, 30 kW, operating weight 375 kg

Further options

Rear support blade, 2500 mm wide
 Flat pads or rubber pads
 Additional control circuit for hydraulic hammer
 Hydraulic quick-attach system
 Fork carrier, 1240 mm wide
 Forks, 1120 mm long
 Quick-change adapter for hammer operation
 Hose-rupture safety valves for intermediate boom and dipperstick
 Filling with biodegradable hydraulic oil, ester-based, VI 68
 Anti-theft device (immobilizer)

* Not permitted for every type of boom. Please inquire.

Further accessories and attachments on request

Subject to change without further notice